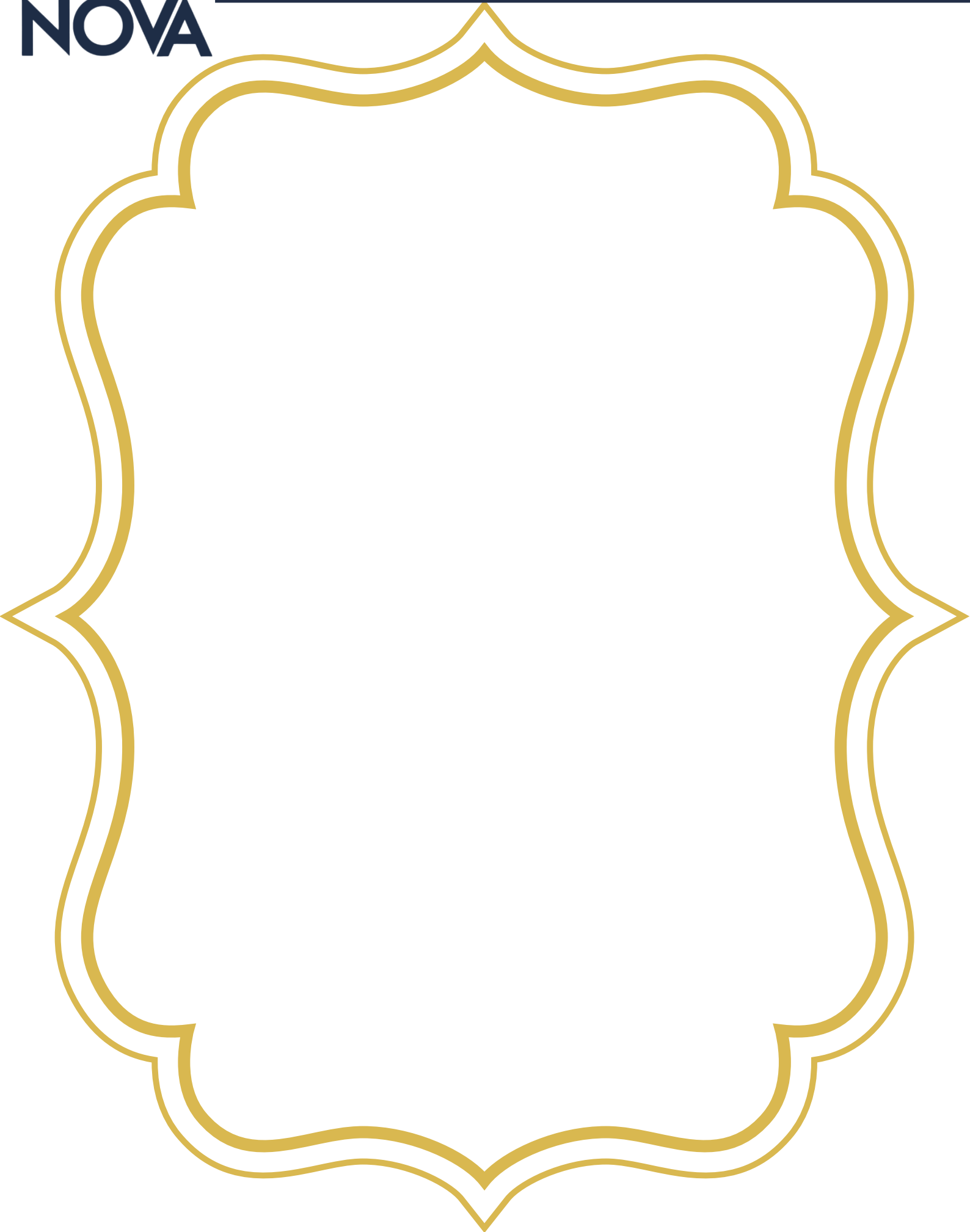




ZOO  
NOVA

Quality Comes First



## About Us:

ZOONOVA FEED ADDITIVES which produces premixes professionally, technologically and hygienically, is a manufacturer and supplier company formed by employees with more than 10 years of industry experience and knowledge.

Our company, which continues its existence in almost every region of Turkey, has become one of the leading companies in the sector. Our company, which has been in contact with the Middle East and African countries in a short time, has become an export company by continuing its activities in these regions.

ZOONOVA FEED ADDITIVES always continues to be with the grower and the consumer by providing high quality products and technical support in advanced technology.

## Our Vision :

To provide high quality products to livestock in Turkey and the world, to provide maximum benefit and to provide the best service permanently by keeping up with the developing technology.

Our most important vision is to ensure the satisfaction of all our customers, to make them become a family with us, to adopt their earnings as our duty and to act in line with this principle.



# LICKING BLOCK

## ZOONOVA YELLOW BLOCK

### PURPOSE OF USE:

- Trace mineral substance of cattle and small cattle in order to meet their needs, vitamin A, D, E needs it is a licking block with prepared vitamin and trace mineral content.
- To meet the salt needs of animals and to open their appetites assists.
- Such as eating soil, licking walls, and eating foreign objects it helps to prevent habits.

### USAGE:

Places where animals can easily reach (feeders and drinkers) used by putting or hanging.

### PACKAGING:

3 kg · 5 kg · 10 kg



### Each Kgs Contain

Iron Iron Oxide	300 mg
Iodine Calcium Iodate	50 mg
Cobalt Cobalt Sulphate	50 mg
Copper Copper Sulphate	550 mg
Manganese Manganese Sulphate	550 mg
Zinc Zinc Oxide	550 mg
Selenium Sodium Selenite	15 mg

## ZOONOVA RED BLOCK

### PURPOSE OF USE:

- Trace mineral substance of cattle and small cattle in order to meet their needs, vitamin A, D, E needs it is a licking block with prepared vitamin and trace mineral content.
- To meet the salt needs of animals and to open their appetites assists.
- Such as eating soil, licking walls, and eating foreign objects it helps to prevent habits.

### USAGE:

Places where animals can easily reach (feeders and drinkers) used by putting or hanging

### Each Kgs Contain

Iron Iron Oxide	200 mg
Iodine Calcium Iodate	50 mg
Cobalt Cobalt Sulphate	50 mg
Copper Copper Sulphate	250 mg
Manganese Manganese Sulphate	250 mg
Zinc Zinc Oxide	250 mg
Selenium Sodium Selenite	15 mg

### PACKAGING:

3 kg · 5 kg · 10 kg



# POWDER GROUP

# SUPER PREMIX

ACTIVE METTER	ADDITIVE NAME	QUANTITY IN 1 KG
Vitamin A	Retinol Acetate	3.000.000 IU
Vitamin D3	Cholecalciferol	600.000 IU
Vitamin E	Alpha Tocopherol Acetate	500 mg
Vitamin B1	Thiamine	500 mg
Vitamin B2	Riboflavin	2.500 mg
Vitamin B3	Nicotinamide	2.000 mg
Vitamin B4	Choline Chloride	75 gr
Vitamin B5	Pantothenic Acid	1.250 mg
Vitamin B6	Prydoxine	330 mg
Vitamin B9	Folic Acid	50 mg
Vitamin K3	Menadione Sodium Bisulphate	500 mg
Iron	Iron Sulphate	10 mg
Copper	Copper Sulphate	1.250 mg
Zinc	Zinc Oxide	12,5 gr
Manganese	Manganese Sulphate	25 gr
Cobalt	Cobalt Sulphate	90 mg
Dry Yeast	Saccaromyces Cerevisiae	100 gr
Methionine	DL-Methionine	10.000 mg
Lysine	L-Lysine	2.500 mg
Calcium	Calcium Carbonate	qsp.

It is a highly prepared mixture to meet the vitamin and trace mineral need of bovine and ovine animals, broiler and layer poultry. It has an appetizing and beneficial effect on feed. Increases animal resistance against metabolic diseases. It provides more meat milk and egg yield in animals. It helps the development problems, egg shell quality and reproductive retention problems.





# TOXIN BINDER

## EXTRA

ACTIVE METTER	QUANTITY IN 1 KG
Inactive Yeast	600.000 mg
Clinoptilolite	200.000 mg
Bentonite	200.000 mg

With its maximum binding capacity, it prevents various mycotoxins: Zearalenone, Vomitoxin, Ochratoxin, T<sub>2</sub> Toxin and Fumonisin from penetrating into the intestine to prevent any performance degradation. Increases the utilization of feed. It accelerates development and provides rapid weight gain. It protects the liver. In order to minimize the negative effects of mycotoxins encountered by dairy and fattening cattle during all their periods, it binds mycotoxins in the digestive system with HSCAS sources with high binding capacity and ensures that they are excreted. It prevents performance decreases by providing maximum protection in single or multiple clinical and subclinical problems of Aflatoxin, Ochratoxin, Fumonisin and T<sub>2</sub> toxins. It binds aflatoxins and allows them to be excreted with feces if spoiled moldy cabbage, beet fossil, hay, bulk feed and raw materials are given to animals.



## YEAST-BASED TOXIN BINDER

Composition Each 10 Kg Contain	
Bentonite	300.000 mg
Clinoptilolite	300.000 mg
Sliymarine	100.000 mg
Inactive Yeast	300.000 mg

The product effectively binds mycotoxins like Zearalenone, Vomitoxin, Ochratoxin, T<sub>2</sub> Toxin, and Fumonisin, preventing them from entering the intestine. This helps maintain animal performance, enhances feed utilization, accelerates growth, and protects the liver. Particularly beneficial for dairy and fattening cattle, it mitigates the negative effects of mycotoxins and promotes their excretion, especially when animals consume spoiled feed such as moldy cabbage, beet fossil, hay, and bulk feed.



## Z-TOX

Composition Each 10 Kg Contain	
Bentonite	310.000 mg
Clinoptilolite	380.000 mg
Sepiolite	308.000 mg
Active Carbon	2.000 mg

This product helps prevent low productivity caused by aflatoxins and heat.

It binds and expels aflatoxins from damaged, moldy silage, pulp, straw, and raw materials, as well as ammonia produced from excess protein consumption, eliminating them through feces.



# BEEF PREMIX

ACTIVE COMPONENT	ACTIVE NAME	QUANTITY IN 10 KG
Vitamin A	Retinol Acetate	500.000 IU
Vitamin D3	Cholecalciferol	200.000 IU
Vitamin E	Alfa Tocopherol Acetate	1.200 mg
Vitamin B7	Biotin	50 mg
Iron	Iron Sulphate	3.300 mg
Iron	Iron Oxide	13.300 mg
Copper	Copper Sulphate	2.200 mg
Zinc	Zinc Oxide	5.000 mg
Manganese	Manganese Sulphate	5.000 mg
Iodine	Calcium Iodate	200 mg
Cobalt	Cobalt Sulphate	100 mg
Selenium	Sodium Selenite	250 mg
Live Yeast	Saccharomyces Cerevisiae	15x10 <sup>9</sup> CFU
BHA	Butylated Hydroxyanisole	100 mg
Sodium	Sodium bi carbonate	5.000 mg
Aroma	Aroma Vanilla	14.000 mg
Calcium	Calcium Carbonate	asp

The BEEF PREMIX is formulated for cattle, sheep, goats, and even other ruminants being raised for meat production. Vitamins that are key to muscle and epithelial development also play a role in bone growth and the efficient functioning of the rumen flora. The trace elements are carefully balanced to support the growth of muscle tissue. In intensive fattening programs, it is crucial not only to provide adequate feed but also to ensure the organism's optimal utilization of the feed. Efficient feed utilization depends on healthy enzyme function, rumen pH, and electrolyte balance. Supported by magnesium oxide and sodium bicarbonate buffers, the Beef Premix contains all the vitamins and minerals necessary for rapid meat production. Additionally, it enhances appetite through its flavor, improving feed utilization and ensuring all essential components for a healthy and productive fattening period.



# BEEF PLUS

ACTIVE COMPONENT	ACTIVE NAME	QUANTITY IN 5 KG
Vitamin A	Retinol Acetate	500.000 IU
Vitamin D3	Cholecalciferol	200.000 IU
Vitamin E	Alfa Tocopherol Acetate	1.200 mg
Vitamin B7	Biotin	50 mg
Iron	Iron Sulphate	3.300 mg
Iron	Iron Oxide	13.300 mg
Copper	Copper Sulphate	2.200 mg
Zinc	Zinc Oxide	5.000 mg
Manganese	Manganese Sulphate	5.000 mg
Iodine	Calcium Iodate	200 mg
Cobalt	Cobalt Sulphate	100 mg
Selenium	Sodium Selenite	250 mg
Live Yeast	Saccharomyces Cerevisiae	15x10 <sup>9</sup> CFU
BHA	Butylated Hydroxyanisole	100 mg
Sodium	Sodium bi carbonate	5.000 mg
Aroma	Aroma Vanilla	14.000 mg
Calcium	Calcium Carbonate	asp

The BEEF PREMIX is formulated for cattle, sheep, goats, and even other ruminants being raised for meat production. Vitamins that are key to muscle and epithelial development also play a role in bone growth and the efficient functioning of the rumen flora. The trace elements are carefully balanced to support the growth of muscle tissue. In intensive fattening programs, it is crucial not only to provide adequate feed but also to ensure the organism's optimal utilization of the feed. Efficient feed utilization depends on healthy enzyme function, rumen pH, and electrolyte balance. Supported by magnesium oxide and sodium bicarbonate buffers, the Beef Premix contains all the vitamins and minerals necessary for rapid meat production. Additionally, it enhances appetite through its flavor, improving feed utilization and ensuring all essential components for a healthy and productive fattening period.



# BEEF DIAMOND

ACTIVE COMPONENT	ACTIVE NAME	QUANTITY IN 1 KG
Vitamin A	Retinol Acetate	500.000 IU
Vitamin D3	Cholecalciferol	200.000 IU
Vitamin E	Alfa Tocopherol Acetate	1.200 mg
Vitamin B7	Biotin	50 mg
Iron	Iron Sulphate	3.300 mg
Iron	Iron Oxide	13.300 mg
Copper	Copper Sulphate	2.200 mg
Zinc	Zinc Oxide	5.000 mg
Manganese	Manganese Sulphate	5.000 mg
Iodine	Calcium Iodate	200 mg
Cobalt	Cobalt Sulphate	100 mg
Selenium	Sodium Selenite	250 mg
Live Yeast	Saccharomyces Cerevisiae	15x10 <sup>9</sup> CFU
BHA	Butylated Hydroxyanisole	100 mg
Sodium	Sodium bi carbonate	5.000 mg
Aroma	Aroma Vanilla	14.000 mg
Calcium	Calcium Carbonate	gsp.

The BEEF PREMIX is formulated for cattle, sheep, goats, and even other ruminants being raised for meat production. Vitamins that are key to muscle and epithelial development also play a role in bone growth and the efficient functioning of the rumen flora. The trace elements are carefully balanced to support the growth of muscle tissue. In intensive fattening programs, it is crucial not only to provide adequate feed but also to ensure the organism's optimal utilization of the feed. Efficient feed utilization depends on healthy enzyme function, rumen pH, and electrolyte balance. Supported by magnesium oxide and sodium bicarbonate buffers, the Beef Premix contains all the vitamins and minerals necessary for rapid meat production. Additionally, it enhances appetite through its flavor, improving feed utilization and ensuring all essential components for a healthy and productive fattening period.



## MGO

ACTIVE COMPONENT	ACTIVE NAME	+ -
Magnesium	Magnesium Oxide (MgO) %40	10
Magnesium	Magnesium Oxide (MgO) %82	10

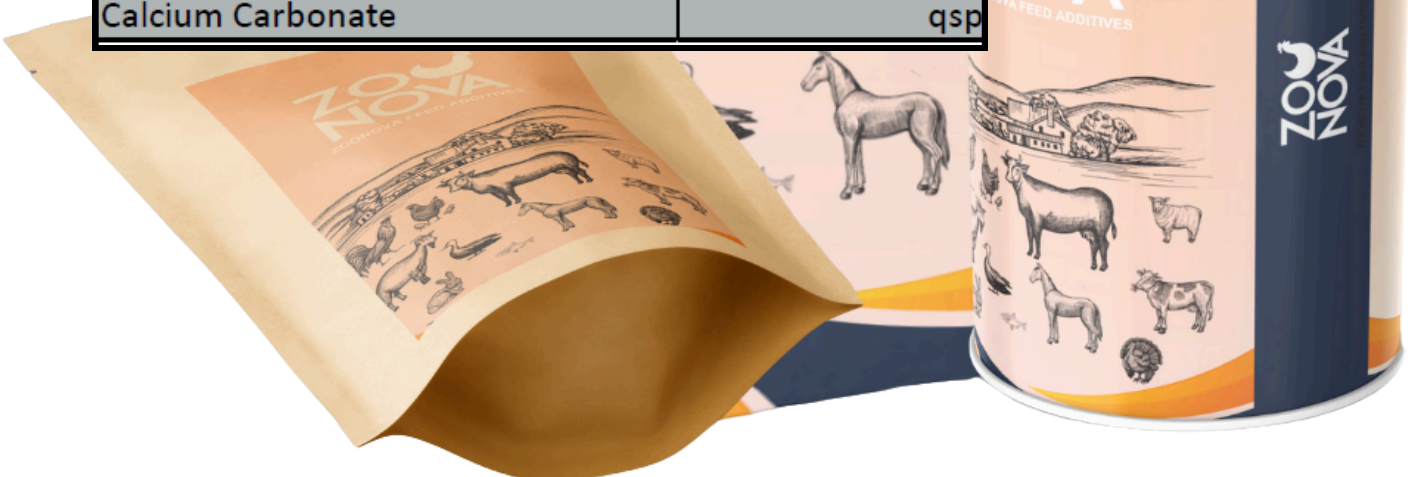
It is a highly prepared mixture to meet the vitamin and trace mineral need of bovine and ovine animals, broiler and layer poultry. It has an appetizing and beneficial effect on feed. Increases animal resistance against metabolic diseases. It provides more meat milk and egg yield in animals. It helps the development problems, egg shell quality and reproductive retention problems.



# Z-SACC

Composition Each 10 Kg Contain	
Vitamin A Retinol Acetate	3.000.000 IU
Vitamin D3 Cholecalciferol	600.000 IU
Vitamin E Alpha Tocopherol Acetate	1.250 mg
Vitamin B3 Niacin	16.000 mg
Bentonite	30.000 mg
Clinoptilolite	20.000 mg
Sepiolite	10.000 mg
Iron Oxide	25.000 mg
Calcium Iodate	400 mg
Cobalt Sulphate	50 mg
Cooper Sulphate	5.000 mg
Manganese Sulphate	27.500 mg
Zinc Oxide	27.500 mg
Sodium Selenite	50 mg
Sodium Chloride	210.000 mg
Magnesium Oxide	120.000 mg
Sodium Bicarbonate	30.000 mg
Dicalcium Phosphate	12.500 mg
Dicalcium Phosphate	9.000 mg
Yeast	$1 \times 10^{10}$ cfu
Butylated Hydroxyanisole	1.000 mg
Calcium Carbonate	qsp

Z-SACC, ensures ruminants-cows, heifers, calves, sheep, and goats-receive essential vitamins and minerals. It prevents nutritional deficiencies, reducing behaviors like wall-licking and soil-eating. By boosting feed efficiency and protecting against toxins, it helps maintain animal health. With regular use, live yeast, rumen regulators, and vital nutrients enhance milk production and improve carcass yield, supporting optimal farm performance.



# FEED MASTER

Composition Each 10 Kg Contain	
Vitamin A Retinol Acetate	6.000.000 IU
Vitamin D3 Cholecalciferol	1.200.000 IU
Vitamin E Alpha Tocopherol Acetate	2.500 mg
Vitamin B3 Niacin	2.000 mg
Bentonite	50.000 mg
Clinoptilolite	40.000 mg
Sepiolite	10.000 mg
Iron Oxide	50.000 mg
Calcium Iodate	800 mg
Cobalt Sulphate	100 mg
Copper Sulphate	10.000 mg
Manganese Sulphate	50.000 mg
Zinc Oxide	55.000 mg
Sodium Selenite	100 mg
Sodium Chloride	210.000 mg
Magnesium Oxide	160.000 mg
Sodium Bicarbonate	60.000 mg
Dicalcium Phosphate	25.000 mg
Dicalcium Phosphate	18.000 mg
Yeast	$2 \times 10^{10}$ cfu
Butylated Hydroxyanisole	1.000 mg
Calcium Carbonate	qsp

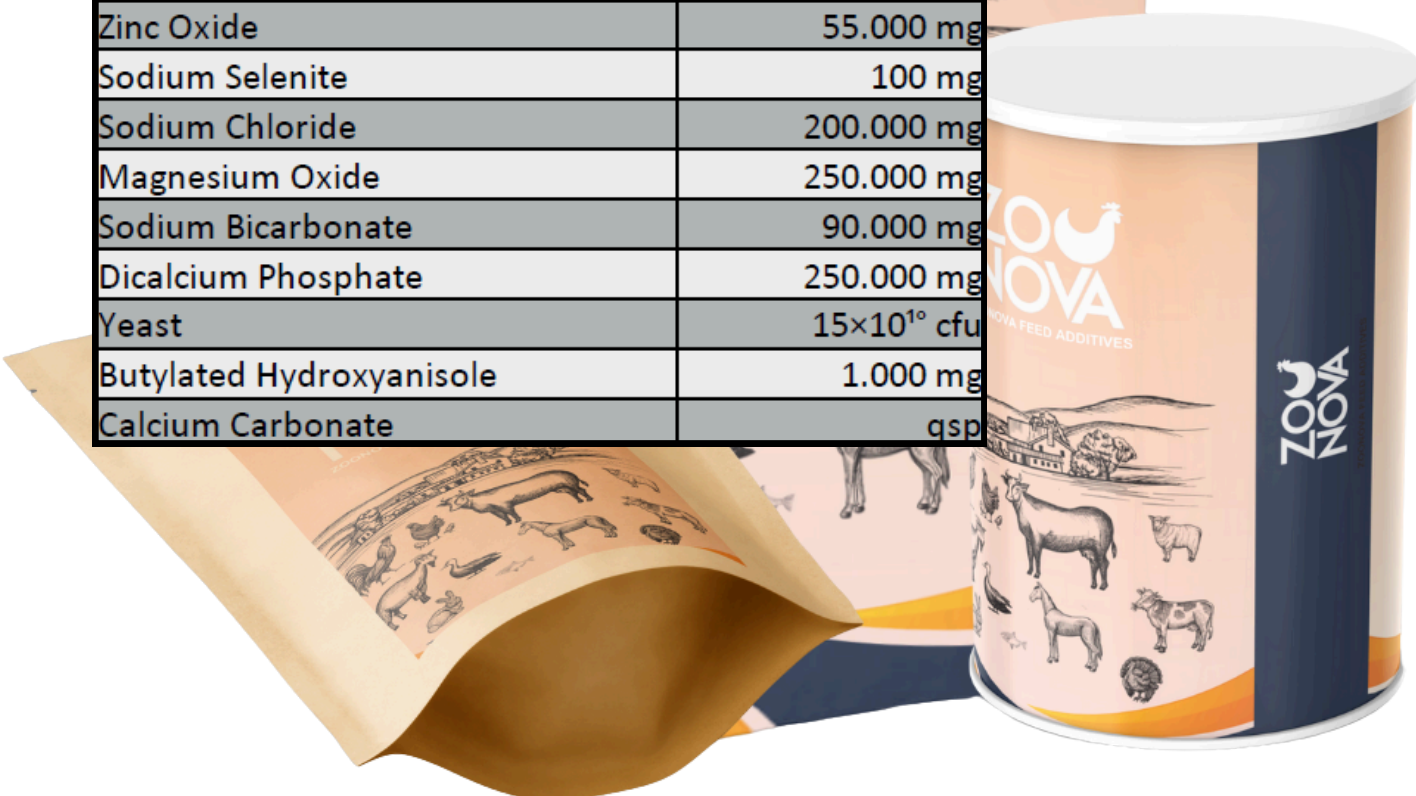
Feed Master, ensures ruminants-cows, heifers, calves, sheep, and goats-receive essential vitamins and minerals. It prevents nutritional deficiencies, reducing behaviors like wall-licking and soil-eating. By boosting feed efficiency and protecting against toxins, it helps maintain animal health. With regular use, live yeast, rumen regulators, and vital nutrients enhance milk production and improve carcass yield, supporting optimal farm performance.



# Z-SUCC PLUS

Composition Each 10 Kg Contain	
Vitamin A Retinol Acetate	14.000.000 IU
Vitamin D3 Cholecalciferol	2.800.000 IU
Vitamin E Alpha Tocopherol Acetate	15.000 mg
Vitamin B1 Thiamine	800 mg
Vitamin B2 Riboflavin	3.000 mg
Vitamin B3 Niacin	2.000 mg
Choline Chloride	5.000 mg
Bentonite	200.000 mg
Clinoptilolite	600.000 mg
Sepiolite	100.000 mg
Iron Oxide	50.000 mg
Calcium Iodate	800 mg
Cobalt Sulphate	100 mg
Cooper Sulphate	10.000 mg
Manganese Sulphate	50.000 mg
Zinc Oxide	55.000 mg
Sodium Selenite	100 mg
Sodium Chloride	200.000 mg
Magnesium Oxide	250.000 mg
Sodium Bicarbonate	90.000 mg
Dicalcium Phosphate	250.000 mg
Yeast	15×10 <sup>10</sup> cfu
Butylated Hydroxyanisole	1.000 mg
Calcium Carbonate	qsp

This vitamin and mineral mixture boosts bovine and ovine productivity by preventing yield loss. With B<sub>1</sub>, B<sub>2</sub>, and B<sub>3</sub> vitamins, it stimulates appetite, binds toxins from moldy feed, and reduces reproductive issues. It strengthens the immune system, enhances digestion, regulates rumen microflora, and increases milk and meat yields. It also mitigates the negative effects of sudden feed changes.



# Z-SHEEP

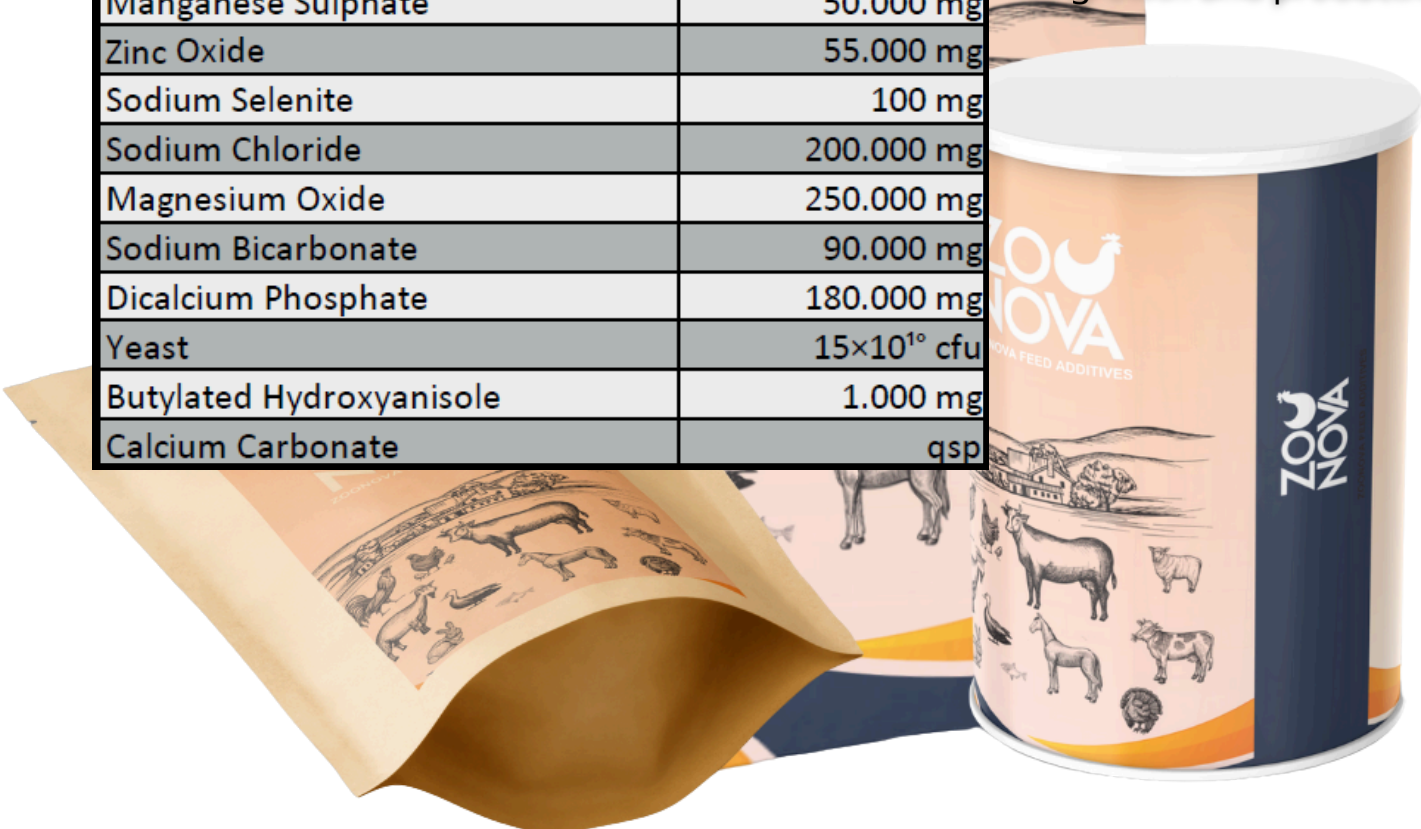
Composition Each 10 Kg Contain	
Vitamin A Retinol Acetate	14.000.000 IU
Vitamin D3 Cholecalciferol	2.800.000 IU
Vitamin E Alpha Tocopherol Acetate	15.000 mg
Vitamin B1 Thiamine	800 mg
Vitamin B2 Riboflavin	3.000 mg
Vitamin B12 Cobalamin	2.000 mg
Choline Chloride	5.000 mg
Bentonite	200.000 mg
Clinoptilolite	600.000 mg
Sepiolite	100.000 mg
Iron Oxide	50.000 mg
Calcium Iodate	800 mg
Cobalt Sulphate	100 mg
Copper Sulphate	10.000 mg
Manganese Sulphate	50.000 mg
Zinc Oxide	55.000 mg
Sodium Selenite	100 mg
Sodium Chloride	200.000 mg
Magnesium Oxide	250.000 mg
Sodium Bicarbonate	90.000 mg
Dicalcium Phosphate	180.000 mg
Yeast	15×10 <sup>10</sup> cfu
Butylated Hydroxyanisole	1.000 mg
Calcium Carbonate	qsp

Premix for Sheep, Goats, Lambs, and Calves:

This premix prevents soil and wool-eating caused by vitamin and mineral deficiencies in small ruminants.

It contains ammonium chloride to prevent urinary stones and strengthens the immune system for better disease resistance.

Additionally, it enhances digestion and stimulates appetite, promoting healthy growth and productivity.



# Z-BUFFER

Composition Each 10 Kg Contain	
Sodium Bicarbonate	350.000 mg
Magnesium oxide	300.000 mg
Inactive Yeast	200.000 mg
Yeast	$10 \times 10^{10}$ cfu
Saccharomyces Cerevisia	qsp

This additive prevents yield loss from sudden feed changes by accelerating digestion and relaxing the rumen.

It boosts milk and carcass yields while neutralizing the effects of moldy feed with a toxin binder.

It also acts as a rumen buffer, protecting against digestive issues.



# YEAST BASED

Composition Each 1Kg Contain	
Yeast	140×10 <sup>12</sup> cfu
Inactive Yeast	250.000 mg
Mannan	50.000 mg
Beta-Glucan	50.000 mg
MOS	60.000 mg
Boncalite	50.000 mg
Calcium Carbonate	qsp

Enhances digestion and nutrient absorption.  
Boosts immune function and feed efficiency.  
Stabilizes rumen pH, reducing acidosis risk.  
Supplies essential nutrients.  
Binds toxins and supports gut health.



## Z-RELAX

Composition Each 10 Kg Contain	
Sodium Bicarbonate	100.000 mg
Magnesium Oxide	200.000 mg
Clinoptilolite	250.000 mg
Sodium Chloride	200.000 mg
Inactive Yeast	100.000 mg
Herbal Extract	18.000 mg

Thanks to the calming herbal extracts it contains, it reduces the activity of the central nervous system, lowers awareness in the brain and reduces the jumping activity in animals.

In this way, all animals only eat, rest and energy losses are reduced.

Weight loss disappears and meat yield increases



# CALF

It is used to provide vitamins and minerals that newborn calves, lambs and capricorns need. It contributes to the high productivity of calves, lambs and capricorns.



For lambs,  
lives,  
health. It  
minerals,  
he  
high

ED FOR

com

500 g

ACTIVE COMPONENT	ACTIVE NAME	QUANTITY IN 1 kg
Saccharomyces Boulardi	Saccharomyces Boulardi	4x10 <sup>10</sup> CFU
Enterococcus Faecium	Enterococcus Faecium NCIMB 104 15	9x10 <sup>10</sup> CFU
MOS	MOS/Beta-Glukan+Oligosakkarit	200.000 mg
Mannan	Saccharomyces cerevisia's cell wall	36.000 mg
Beta-Glukan	Saccharomyces cerevisia's cell wall	44.000 mg
Methionine	L- Methionine	20.000 g
Lysine	L-Lysine	5.000 mg
Extra Amino Acids	Extra Amino Acids	11.565 mg
Egg Products	Immunoglobulini IgY	5.000 mg
Sea Algs	Sea Algs	10.000 mg
Citric Acid	Citric Acid	30.000 mg
Lactic Acid	Lactic Acid	15.000 mg
Butyric Acid	Butyric Acid	20.000 mg
Humic Acid	Humic Acid	5.000 mg
Vegetable Extract	U.Y.A. Organic Vegetable Extract	25.000 mg
Vitamin A	Retinol Acetate	5.000.000 IU
Vitamin D3	Cholecalciferol	1.000.000 IU
Vitamin E	Alfa Tocopherol Acetate	5.000 mg
Vitamin C	Ascorbic Acid	1.500 mg
Vitamin K3	Synthetic Menadion	100 mg
Vitamin B1	Thiamine	200 mg
Vitamin B2	Riboflavin	550 mg
Vitamin B3	Niasin	6.000 mg
Vitamin B5	Calcium D-Panthenat	50 mg
Vitamin B6	Pyridoxine	100 mg
Vitamin B7	D-Biotin	35 mg
Vitamin B9	Folic Acid	1.000 mg
Choline	Choline Chloride	1.000 mg
Iron	Iron Sulphate	10.000 mg
Iodine	Calcium Iodate	160 mg
Cobalt	Cobalt Sulphate	30 mg
Copper	Copper Sulphate	1.500 mg
Chelated copper	Hydrated Amino Acid Chelate of Copper	500 mg
Manganese	Manganese Sulphate	8.000 mg
Chelated Manganese	Hydrated Amino Acid Chelate of Manganese	2.000 mg
Zinc	Zinc Sulphate	7.000 mg
Chelated Zinc	Hydrated Amino Acid Chelate of Zinc	5.000 mg
Selenium	Sodium Selenite	30 mg
Chelated Selenium	Hydrated Amino Acid Chelate of Selenium	20 mg
Sodium	Sodium Chloride	19.000 mg
Calcium	Dicalcium Phosphate	2.500 mg
Phosphor	Dicalcium Phosphate	1.800 mg
Magnesium	Magnesium Oxide	20.000 mg
BHA	Butylated Hydroxyanisole	50.000 mg
Lactose	Lactose Monohydrate	2.000 mg
Inactive Yeast	Inactive Yeast	qsp.



# VIT-C

**Purpose of Usage** It is indicated for the prevention of hypo-vitaminosis and amino acid deficiencies in case of vaccination, subclinical diseases, changes of feed composition and other stress involving conditions in poultry. It helps to increase the quality of the eggshell, fertility and hatchability. Helps prevent inflammation, hemorrhagic diathesis, exudative conditions, allergies. It helps support the liver system. It helps strengthen the immune system.



ACTIVE COMPONENT	ACTIVE NAME	LEVEL	UNIT/KG
Ascorbic Acid	Ascorbic Acid %99	1.000.000	mg

**Usage for Poultry: 1 gm / 5 Lt Drinking Water**



## LYSO PLUS

Purpose of Usage: Lyso Plus is a unique and comprehensive formula for the immunity and growth in broiler layer and breeders.

It's effective for all ye of viral problems line. Help animals immune organs growth promote get strong Immunity.

Stimulates antibodies production, release animal stress.

Help vaccine be utilized properly and completely.

Improve layer egg production and breeder fertility rate.

Improve broilers production performance at lower cost.

ACTIVE NAME	LEVEL	UNIT/GR
Lysozyme	550	mg
Vitamin C	150	mg
Selenium	200	mg
Vitamin E	100	mg

### Usage

**Preventive: 1 g in 8 litres drinking water for 3-5 days**

**Treatment: 1 g in 4 litres drinking water for 3-5 days**



## Z-K3

**Prevents Anemia:** Supports blood clotting and prevents anemia after hemorrhage.

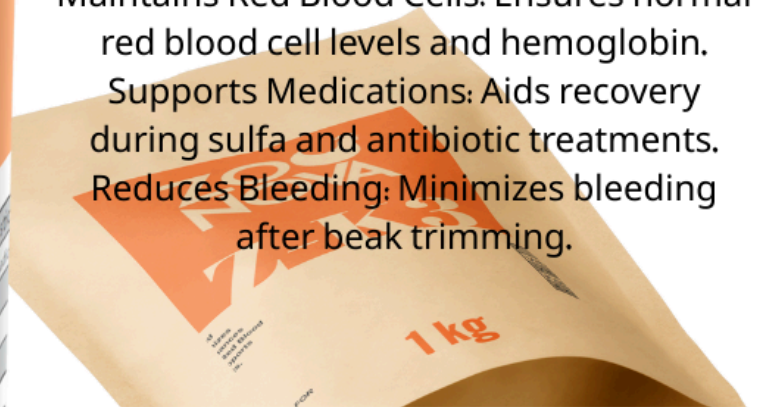
**Reduces Blood Spots:** Minimizes blood spots in eggs and blood in urine.

**Prevents Infections:** Enhances immunity against coccidiosis and Gumboro disease.

**Maintains Red Blood Cells:** Ensures normal red blood cell levels and hemoglobin.

**Supports Medications:** Aids recovery during sulfa and antibiotic treatments.

**Reduces Bleeding:** Minimizes bleeding after beak trimming.



Composition Each 1 Gr Contain	
Vitamin K3(Menadione Sodium Bisulphite)	125 mg
Vitamin B12	20 mg
Folic Acid	400 mg
Excipients	qsp



## ELECTRONOVA

Purpose of Usage It helps to meet the electrolyte needs against dehydration and diarrhea for Poultry. It helps to support the immune system and helps increase the body's resistance against the diseases.

ACTIVE COMPONENT	ACTIVE NAME	LEVEL	UNIT/KG
Sodium BiCarbonate	Sodium BiCarbonate	400.000	mg
Sodium	Sodium Sulphate	190.000	mg
Sodium	Sodium Chloride	190.000	mg
Potassium	Potassium Chloride	105.000	mg
Magnesium	Magnesium Chloride	5.000	mg
Zinc	Zinc Oxide	11.000	mg
Manganese	Manganese Sulphate	12.000	mg
Vitamin C	Ascorbic acid	10.000	mg
Maltodextrine	Maltodextrine		qsp.

Usage for Poultry: 1 g per 2-3 Lt Drinking Water



# ZOOFEINE

It boosts the immunity of poultry while delivering high energy levels for enhanced efficiency. Additionally it meets salt requirements, alleviates stress, and serves as a vital energy source for all animals.



Compsition Each 1 Kg Contain	
Vitamin C	200.000 mg
Caffeine	36.000 mg
Potassium Chloride	20.000 mg
Sodium Sulphate	200.000 mg
Sodium Chloride	200.000 mg
Salicylic Acid	280.000 mg
Citric Acid	5.000 mg
Lactose	qsp



# IMMUNE

It enhances immune regulation in poultry, fortifying the immune system to prevent disease entry and support recovery from ailments. It specifically targets coccidiosis and its causative agents, regulates the digestive system, and promotes increased appetite.

Composition Each 1 Kg Contain	
Vitamin C	100.000 mg
Vitamin B6	4.000 mg
Vitamin B9	2500 mg
Magnesium Sulphate	100.000 mg
Potassium Sulphate	50.000 mg
Sodium Bicarbonate	200.000 mg
Inactive Yeast	40.000 mg
Slymarine	10.000 mg
Thyme Extract	6.000 mg
Calcium Propionate	50.000 mg
Dextrose	qsp



# Z-CARE

Gumboro disease, caused by the Infectious Bursal Disease Virus (IBDV), poses a significant threat to poultry, particularly young birds. To combat this disease and promote overall health, a specialized nutritional mix containing essential ingredients has been developed, which is designed to support poultry health and enhance immunity.

Composition Each 1 Kg Contain	
Ammonium Chloride	700.000 mg
Vitamin A	3.000 IU
Vitamin C	120.000 mg
Vitamin K3	300 mg
DL-Methionine	110.000 mg
Dextrose up to	qsp



# LIQUID GROUP



## ADEK-C

**Purpose of Usage:** It helps reproductive and productive parameters such as feed conversion rate. It has antioxidant and immune-stimulant action, improves growth and the maintenance of bone and skeletal system. It helps to prevent treatment of stress caused by vaccination, diseases, transport, high humidity, extreme temperature changes and heat stress.

ACTIVE COMPONENT	ACTIVE NAME	LEVEL	UNIT/LT
Vitamin A	Retinyl palmitate	10.000.000	IU
Vitamin D3	Cholecalciferol	2.000.000	IU
Vitamin E	AlphaTocopherol	20.000	mg
Vitamin C	Ascorbic Acid	40.000	mg
Vitamin K3	Menadion Sodium Bisulphate	5.000	mg
Water	Distilled Water		qsp.

**Usage for Poultry:** It is used by mixing 1 ml / 5-6 Liters into Poultry Drinking water.



## MILKY-Z

Increases Milk Production: Boosts daily milk yield.

Improves Milk Quality: Enhances both milk fat content and overall milk quality.

Facilitates Digestion: Promotes rumen relaxation and better digestion.

Liver Health: Amino acids aid in liver support and regeneration.

Composition Each 1 Lt Contain	
Vitamin A Retinol Acetate	500.000 IU
Vitamin D3 Cholecalciferol	20.000 IU
Vitamin E Alpha Tocopherol Acetate	500 mg
Vitamin B1 Thiamine	80 mg
Vitamin B2 Riboflavin	300 mg
Vitamin B3 Niacin	200 mg
BYPASS FAT	1.000 mg
CHOLINE Choline Chloride	500 mg
METHIONINE L-Methionine	2.000 mg
LYSINE L-Lysine	6.000 mg

LYSINE L-Lysine	6.000 mg
IRON Iron Oxide	5.000 mg
IODINE Calcium Iodate	80 mg
COBALT Cobalt Sulphate	10 mg
COOPER Cooper Sulphate	1.000 mg
MANGANESE Manganese Sulphate	5.000 mg
ZINC Zinc Oxide	5.000 mg
SELENIUM Sodium Selenite	10 mg
SODIUM Sodium Chloride	20.000 mg
MAGNESIUM	20.000 mg
SODA Sodium Bicarbonate	9.000 mg
CALCIUM Dicalcium Phosphate	5.000 mg
PHOSPHORUS Dicalcium Phosphate	3.000 mg
YEAST Saccharomyces cerevisia	1,5×10 <sup>10</sup>
BHA Butylated Hydroxyanisole H2O	100 mg
DISTILLED WATER	qsp



# LYSO PLUS

Lyso Plus is a unique and comprehensive formula for the immunity and growth in broiler layer and breeders.

It's effective for all ye of viral problems line.

Help animals immune organs growth promote get strong Immunity.

Stimulates antibodies production, release animal stress.

Help vaccine be utilized properly and completely.

Improve layer egg production and breeder fertility rate.

Improve broilers production performance at lower cost.

ACTIVE NAME	LEVEL	UNIT/ml
Lysozyme	550	mg
Vitamin C	150	mg
Selenium	200	mg
Vitamin E	100	mg

## Usage

**Preventive: 1 ml in 8 litres drinking water for 3-5 days**

**Treatment: 1 ml in 4 litres drinking water for 3-5 days**



## MULTI-VIT

For Ruminants and Poultry: Suitable for both groups.

Increases Egg Productivity: Improves egg production and shell quality.

Stimulates Appetite: Enhances appetite in animals. Boosts Meat and Milk Yield: Increases both meat and milk production. Energy Source: Provides essential energy. Reduces Infection Risk: Lowers the risk of infection and disease.

Composition Each 1ml Contain	
Vitamin A (Retinol Palmitate)	10,000 IU
Vitamin D3 (Cholecalciferol)	3,000 IU
Vitamin E (Alpha-Tocopherol-acetate)	30 mg
Vitamin B1 (Thiamine)	3 mg
Vitamin B2 (Riboflavine)	6 mg
Vitamin B6 (pyridoxine hydrochloride)	4 mg
Vitamin B12(cyanocobalamin)	30 mg
Vitamin C (ascorbic acid)	20 mg
Vitamin K3 (menadione)	2 mg
D-panthenol	10 mg

D-panthenol	10 mg
Nicotinamide	40 mg
Biotin	150 mg
Folic acid	1 mg
Choline chloride	25 mg
Alanine	1.44 mg
Arginine	1.8 mg
Aspartic acid	3.78 mg
Cystine	0.06 mg
Glutamic acid	5.94 mg
Glycine	11.26 mg
Histidine	0.72 mg
Iso-leucine	0.9 mg
Leucine	1.98 mg
Lysine	11.62 mg
Methionine	10.36 mg
Phenylalanine	1.26 mg
Proline	1.62 mg
Serine	1.44 mg
Threonine	0.9 mg
Tryptophane	0.08 mg
Tyrosine	0.72 mg
Valine	0.9 mg

# MULTI-AMINO

Designed for All Poultry Groups: Specially formulated for various poultry types. Stress Prevention: Contains vitamins that help prevent stress factors. Improved Egg Quality: Enhances overall egg quality and shell strength. Strengthened Immune System: Boosts the immune response in poultry. High Amino Acid Content: Provides essential amino acids for better health. Promotes Ovulation: Supports reproductive health and ovulation. Increased Meat Yield: Enhances both yield and quality in broiler farming.



Composition Each 1 Lt Contain			
		Cysteine	0.15 mg
Vitamin A	2.500 IU	Glutamic acid	1.16 mg
Vitamin D	3.500 IU	Glycine	0.575 mg
Vitamin E	3.75 mg	Histidine	0.090 mg
Vitamin B1	3.5 mg	Isoleucine	0.125 mg
Vitamin B2	4.0 mg	Leucine	1.50 mg
Vitamin B6	2.0 mg	Lysine	2.5 mg
Vitamin B12	10.0 mg	Methionine	5.0 mg
Vitamin K3	0.25 mg	Phenylalanine	0.61 mg
D-Pantetonate	15.0 mg	Proline	0.51 mg
Biotin	2.0 mg	Serine	0.68 mg
Choline Chloride	400 mg	Threonine	0.50 mg
Inositol	2.5 mg	Tryptophane	75 mg
Alanine	0.975 mg	Thyrosine	0.34 mg
Arginine	0.49 mg	Valine	1.10 mg
Aspartic acid	1.45 mg	Solvents ad	1 ml



## COOL

**Purpose of Usage** It is indicated for the prevention of respiratory problems especially related with bronchial plugs and it strengthens the protective mechanism & functioning of respiratory system. It is useful in infectious bronchitis, influenza and related respiratory diseases. It helps to prevent respiratory disease complex like Broncho-pneumonia & infectious sinusitis. It is also effective in respiratory & associated symptoms like cough, nasal discharge, tracheal rales, gasping & labored breathing. It is effective during pre & post vaccination therapy of New Castle Disease. It stimulates the appetite and enhances the overall performance.

ACTIVE COMPONENT	ACTIVE NAME	LEVEL	UNIT/LT
Eucalyptus Oil	Eucalyptus Oil	50.000	ml
Menthol	Menthol	50.000	mg
Thyme Oil	Thyme Oil	5.000	ml
Mint Oil	Mint Oil	20.000	ml
Water	Distilled Water		qsp.

**Usage for Poultry:** It is used by mixing 1 ml / 4 Liters into Drinking Water.



## E-SEL 20

**Purpose of Usage:** It helps the structural and functional maintenance of the skeleton, heart and smooth muscles. It helps strengthen the immune system.

Helps prevent inflammation, hemorrhagic diathesis, exudative conditions, allergies. It helps to increase the quality of the eggshell, fertility and hatchability. It accelerates the development and helps to provide rapid weight gain.

ACTIVE COMPONENT	ACTIVE NAME	LEVEL	UNIT/LT
Vitamin E 98%	AlphaTocopherol Acetate	200.000	mg
Selenium (Se)	Sodium Selenite	150	mg
Water	Distilled Water		qsp.

**Usage for Poultry:** It is used by mixing 1 ml / 4 Liters of Drinking Water



# GARLIC

**Destroys Pathogens:** Effectively eliminates parasitic fungi, viruses, and bacteria that can cause infections.

**Immune Support:** Strengthens and supports the immune system.

**Liver Support:** Promotes liver health and function.

**Antioxidant Properties:** Provides antioxidant benefits, protecting cells from oxidative stress.

Composition Each 1 Lt Contain	
Garlic Extract	15.000 mg
Oregano Vulgaris	3.000 mg
Magnesium Sulphate	2.500 mg
Zinc Sulphate	2.000 mg
Manganese Sulphate	500 mg
Ferrous Sulphate	1.000 mg
Distilled Water	qsp



# OMEGA-Z

Omega fatty acids improve skin and coat health and hoof quality for horses.

It is effective in reducing the level of saturated fatty acids in abdominal fat and carcasses of broiler chickens.

Supports pets skin health and has anti-inflammatory properties

ACTIVE COMPONENT	LEVEL	UNIT/LT
Omega-3 & 6 oils	500.000	mg
Fish Oil		qsp.

**Usage for Poultry: It is used by mixing 1 ml / 4 Liters of Drinking Water**



# IODINE %5

For Poultry, Influenza, Newcastle Disease, Gumboro Disease. For Cattle: FMD, Bovine pestis, diarrhea, pneumonia, mastitis, metritis, salmonellosis, leptospirosis, anthrax, brucellosis, aspergillosis and other diseases.

ACTIVE COMPONENT	LEVEL	UNIT/100 ml
Povidone Iodine	50	g

**Usage: 1:250 or 4 ml/Litre.**

# LIVER PUNCH

**Purpose of Usage:** It optimizes liver function. It also stimulates fatty acid metabolism, bile secretion and digestive functions.

It acts as a liver protector, lowers the pH and ammonia level at the colon level, and facilitates the removal of toxins.

Prevention of liver damage from mycotoxins & avoid perosis.

Minimised liver damage due to pathogens like bacteria, virus, fungi & to overcome hypertrophy of liver.

Increased liver secretions for better digestion and boost liver function. Faster recovery from stress & diseases of all types.

Enhanced Immunity Improved Growth, FCR, Fertility & Hatchability.

Optimizes liver function, stimulates fatty acid metabolism, bile secretion and digestive functions. It also lowers the pH and ammonia level at the colon level, and facilitates the removal of toxins. Prevention of liver damage from mycotoxins & avoid perosis. Minimised liver damage due to pathogens like bacteria, virus, fungi & to overcome hypertrophy of liver. Increased liver secretions for better digestion and boost liver function. Faster recovery from stress & diseases of all types. Improved Growth, FCR, Fertility & Hatchability.

5 L

5 L

THIS IS A PREMIX. IT CANNOT BE USED FOR TREATMENT.

[www.zoonovaadditives.com](http://www.zoonovaadditives.com)

ACTIVE COMPONENT	MA
Vitamin E	Alpha
Choline	Choline
D-Panthenol	D-Pan
Magnesium Sulphate	Magne
L-Lysine	L-Lys
DL Methionine	DL-M
Silymarine	Silym
Betaine	Beta
Carnitine	Carni
Sorbitol	Sorb
Water	Dist

Usage: Broilers: 50-100 ml daily per 1000 birds from 3rd to 8th week.  
Growers/Layers: 250 ml daily per 1000 birds as a week a month program.

ACTIVE COMPONENT	ACTIVE NAME	LEVEL	UNIT/100 ML
Vitamin E	AlphaTocopherol	25	mg
Choline	Choline Chloride (%20)	20.000	mg
D-Panthenol	D-Panthenol (%2,5)	2.500	mg
Magnesium Sulphate	Magnesium Sulphate (%10)	10.000	mg
L-Lysine	L-Lysine	1.36	mg
DL Methionine	DL-Methionine	2.53	mg
Silymarine	Silymarine (%6)	6.000	
Betaine	Betaine (%1)	1.000	mg
Carnitine	Carnitine Hydrochloride (%5)	5.000	mg
Sorbitol	Sorbitol (%40)	40.000	mg
Water	Distilled Water		qsp.

Usage: Broilers: 50-100 ml daily per 1000 birds through drinking water from 3rd to 8th week.

Growers/Layers: 250 ml daily per 1000 birds through drinking water as a week a month program.

## ELECTRO-RACE

Supporter for Race Horses and Race Camels.  
Maintains Water Balance: Supports proper hydration in the body. Balances Blood pH: Helps regulate the blood's pH level. Supports Nervous System: Regulates the central nervous system. Prevents Fatigue: Reduces fatigue after diarrhea. Restores Lost Fluids: Aids in the recovery of fluids lost from the body.

ZOO  
NOVA

## ELECTRO-RACE

Usage: Supporter for Race Horses and Race Camels. Maintains Water Balance: Supports proper hydration in the body. Balances Blood pH: Helps regulate the blood's pH level. Supports Nervous System: Regulates the central nervous system. Prevents Fatigue: Reduces fatigue after diarrhea. Restores Lost Fluids: Aids in the recovery of fluids lost from the body.

By:  
Additives  
additives.com  
Türkiye  
S 495 6322  
TR-4200564  
9495

A MEDICINE. THIS IS A PREMIX. IT CANNOT BE TREATED.

www.zoonovaadditives.com

Composition Each 1 Lt Contain	
Sodium Chloride	2.25
Sodium Bicarbonate	1.50
Dextrose	50
Magnesium	1.00
Distilled water	

Usage: 1L to 2000 L of warm water.

ZOO  
NOVA

Composition Each 1 Lt Contain	
Sodium Chloride	2.250 mg
Sodium Bicarbonate	1.500 mg
Dextrose	500 mg
Magnesium	1.000 mg
Distilled water	qsp

Usage: 1L to 2000 L of warm water.

5 L

5 L

## ORGACID

It works as a Salmonella inhibitor, acidifying the intestinal pH and thus helping to protect and improve the intestines.



Usage: It works as a Salmonella inhibitor, acidifying the intestinal pH and thus helping to protect and improve the intestines away from sunlight and moisture. Keep together with pesticides. Its own shape and smell and has no known side effects. Usage should be avoided.

Manufactured By:  
Zoonova Feed Additives - www.zoonovaadditives.com  
Jalapa, Mexico  
+52 545 595 6322  
Tel No: a TR-4200564  
Rate: 1/95  
NOT A MEDICINE. THIS IS A PREMIX. IT CANNOT BE USED AS A TREATMENT.

ISO 9001 ISO 14001 RECYCLED MATERIALS

20 L

ACTIVE COMPONENT	LEVEL
Butyric Acid	4.900.000
Formic Acid	400.000
Citric Acid	50.000
Lactic Acid	18.000
Propionic Acid	100.000
Acetic Acid	100.000
Ammonium Propionate	10.000
Ammonium Phosphate	10.000
Tartaric Acid	10.000
Copper Sulphate	15.000
Zinc Sulphate	6.900
Distilled Water	

Usage: It is used by adding 1-3 liters to every 1.000 kg of product.

ACTIVE COMPONENT	LEVEL	UNIT/L
Butyric Acid	4.900.000	mg
Formic Acid	400.000	mg
Citric Acid	50.000	mg
Lactic Acid	18.000	mg
Propionic Acid	100.000	mg
Acetic Acid	100.000	mg
Ammonium Propionate	10.000	mg
Ammonium Phosphate	10.000	mg
Tartaric Acid	10.000	mg
Copper Sulphate	15.000	mg
Zinc Sulphate	6.900	mg
Distilled Water		qsp.

Usage: It is used by adding 1-3 liters to every 1.000 kg of product.

# MOLASSES

**Energy Source:** Provides a highly digestible energy boost. **Palatability Enhancer:** Improves feed taste, encouraging intake.

**Nutrient Supplement:** Contains essential vitamins and minerals.

**Digestive Aid:** Promotes healthy gut bacteria growth.

**Supports Weight Gain:** Aids in growth for young animals. **Stress Reduction:** Helps reduce stress during transport. **Cost-Effective Additive:** Enhances feed efficiency economically.

## ZOO NOVA MOLASSES

**Energy Source:** Provides a highly digestible energy boost. **Palatability Enhancer:** Improves feed taste, encouraging intake. **Nutrient Supplement:** Contains essential vitamins and minerals. **Digestive Aid:** Promotes healthy gut bacteria growth. **Supports Weight Gain:** Aids in growth for young animals. **Stress Reduction:** Helps reduce stress during transport. **Cost-Effective Additive:** Enhances feed efficiency economically.

ives  
ves.com  
iye  
8322  
200564

ADICINE. THIS IS A PREMIX. IT CANNOT BE  
TMENT.

www.zoonovaadditives.com

5 L

ACTIVE COMPONENT	LEVEL
Vitamin A	100 IU
Molasses	Sugar Beetroot

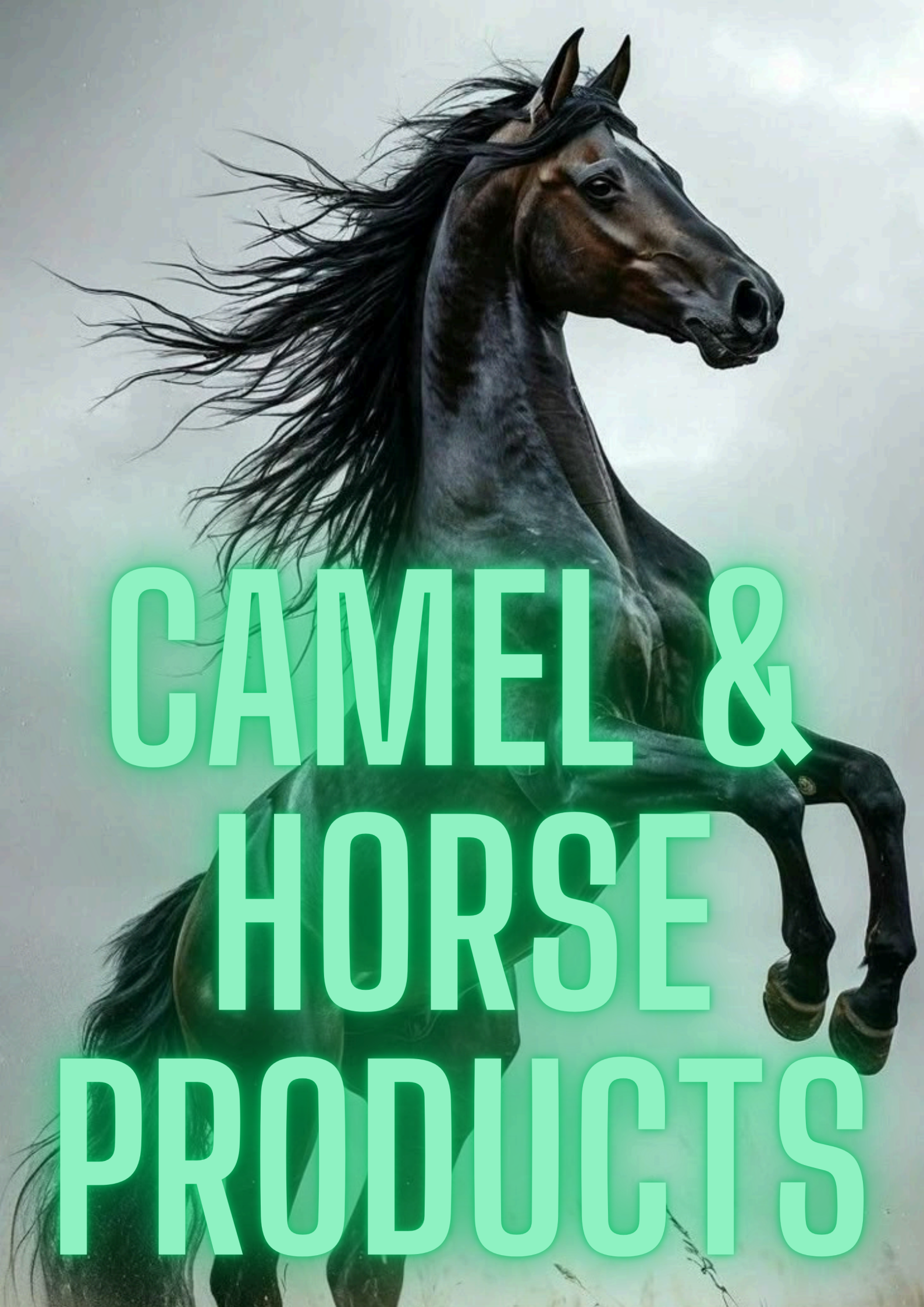
Usage: 2 Kg for 1000 ltr of Water or 2 Kg for 1000 Kg of Feed or 10 gr for 100 Kg/ Animal (Oral)

ZOO  
NOVA

ACTIVE COMPONENT	LEVEL	UNIT/LT
Vitamin A	100 IU	IU.
Molasses	Sugar Beetroot	qsp.

Usage: 2 Kg for 1000 ltr of Water or 2 Kg for 1000 Kg of Feed or 10 gr for 100 Kg/ Animal (Oral)

5 L



# CAMEL & HORSE PRODUCTS

# Z-CAMEL

Composition Each 1 Kg Contain	
Vitamin A Retinol asetate	100.000 IU
Vitamin D Cholecalciferol	30.000 IU
Vitamin E Alpha tokopheril asetate	10.000 mg
Vitamin K Menadione	280 mg
Biotin	100 mg
Calcium iodate	80 mg
Sodium Selenite	20 mg
Manganese Sulfate	30.000 mg
Cobalt Sulfate	200 mg
Iron oxide	30.000 mg
Sodium Chloride	qsp

It prevents pica in camels caused by trace mineral deficiencies, such as wall licking and grouse nibbling. Additionally, it aids in water retention and helps regulate their temper during winter.



# Z-HORSE

Composition Each 1 Kg Contain	
Vitamin A	10.000.000 IU
Vitamin D3	3.500.000 IU
Vitamin E	4.500 mg
Vitamin K3	2.000 mg
Vitamin C	2.500 mg
Vitamin B1	300 mg
Vitamin B2	250 mg
Vitamin B3 (Niacin)	6.000 mg
Vitamin B5	280 mg
Vitamin B6	230 mg
Vitamin B7(Biotin)	125 mg
Vitamin B12	8 mg
Sulfur	25 mg
Iron	2.000 mg
Iodine	100 mg
Cobalt	55 mg
Copper	1.500 mg
Manganese	1.500 mg
Zinc	3.000 mg
Selenium	130 mg

It provides higher efficiency by meeting the mineral and vitamin needs of Horses.

It supports their fertility. It provides shine to the hair.

It prevents diseases such as wall licking and soil eating.

It increases water retention.

It strengthens the nail structure.

ADDITIVES





# OMEGA-Z

Omega fatty acids improve skin and coat health and hoof quality for horses.

It is effective in reducing the level of saturated fatty acids in abdominal fat and carcasses of broiler chickens.

Supports pets skin health and has anti-inflammatory properties

ACTIVE COMPONENT	LEVEL	UNIT/LT
Omega-3 & 6 oils	500.000	mg
Fish Oil		qsp.

**Usage for Poultry: It is used by mixing 1 ml / 4 Liters of Drinking Water**

## ELECTRO-RACE

Supporter for Race Horses and Race Camels.  
Maintains Water Balance: Supports proper hydration in the body. Balances Blood pH: Helps regulate the blood's pH level. Supports Nervous System: Regulates the central nervous system. Prevents Fatigue: Reduces fatigue after diarrhea. Restores Lost Fluids: Aids in the recovery of fluids lost from the body.

ZOO  
NOVA

## ELECTRO-RACE

Usage: Supporter for Race Horses and Race Camels. Maintains Water Balance: Supports proper hydration in the body. Balances Blood pH: Helps regulate the blood's pH level. Supports Nervous System: Regulates the central nervous system. Prevents Fatigue: Reduces fatigue after diarrhea. Restores Lost Fluids: Aids in the recovery of fluids lost from the body.

By:  
Additives  
additives.com  
Türkiye  
S 495 6322  
TR-4200564  
9495

A MEDICINE. THIS IS A PREMIX. IT CANNOT BE TREATED.

www.zoonovaadditives.com

Composition Each 1 Lt Contain	
Sodium Chloride	2.25
Sodium Bicarbonate	1.50
Dextrose	50
Magnesium	1.00
Distilled water	

Usage: 1L to 2000 L of warm water.

ZOO  
NOVA

Composition Each 1 Lt Contain	
Sodium Chloride	2.250 mg
Sodium Bicarbonate	1.500 mg
Dextrose	500 mg
Magnesium	1.000 mg
Distilled water	qsp

Usage: 1L to 2000 L of warm water.

5 L

5 L

# MOLASSES

**Energy Source:** Provides a highly digestible energy boost. **Palatability Enhancer:** Improves feed taste, encouraging intake.

**Nutrient Supplement:** Contains essential vitamins and minerals.

**Digestive Aid:** Promotes healthy gut bacteria growth.

**Supports Weight Gain:** Aids in growth for young animals. **Stress Reduction:** Helps reduce stress during transport. **Cost-Effective Additive:** Enhances feed efficiency economically.

## ZOO NOVA MOLASSES

**Energy Source:** Provides a highly digestible energy boost. **Palatability Enhancer:** Improves feed taste, encouraging intake. **Nutrient Supplement:** Contains essential vitamins and minerals. **Digestive Aid:** Promotes healthy gut bacteria growth. **Supports Weight Gain:** Aids in growth for young animals. **Stress Reduction:** Helps reduce stress during transport. **Cost-Effective Additive:** Enhances feed efficiency economically.

ives  
ves.com  
iye  
8322  
200564

ADICINE. THIS IS A PREMIX. IT CANNOT BE  
TMENT.

www.zoonovaadditives.com

5 L

ACTIVE COMPONENT	LEVEL
Vitamin A	100 IU
Molasses	Sugar Beetroot

Usage: 2 Kg for 1000 ltr of Water or 2 Kg for 1000 Kg of Feed or 10 gr for 100 Kg/ Animal (Oral)

## ZOO NOVA

ACTIVE COMPONENT	LEVEL	UNIT/LT
Vitamin A	100 IU	IU.
Molasses	Sugar Beetroot	qsp.

Usage: 2 Kg for 1000 ltr of Water or 2 Kg for 1000 Kg of Feed or 10 gr for 100 Kg/ Animal (Oral)

5 L



## ELECTRONOVA

Purpose of Usage It helps to meet the electrolyte needs against dehydration and diarrhea for Poultry. It helps to support the immune system and helps increase the body's resistance against the diseases.

ACTIVE COMPONENT	ACTIVE NAME	LEVEL	UNIT/KG
Sodium BiCarbonate	Sodium BiCarbonate	400.000	mg
Sodium	Sodium Sulphate	190.000	mg
Sodium	Sodium Chloride	190.000	mg
Potassium	Potassium Chloride	105.000	mg
Magnesium	Magnesium Chloride	5.000	mg
Zinc	Zinc Oxide	11.000	mg
Manganese	Manganese Sulphate	12.000	mg
Vitamin C	Ascorbic acid	10.000	mg
Maltodextrine	Maltodextrine		qsp.

Usage for Poultry: 1 g per 2-3 Lt Drinking Water

# ZOONOVA

Contact: +90 545 695 6322  
info@zoonovaadditives.com  
www.zoonovaadditives.com  
Selçuklu/Konya/Türkiye

## ZOONOVA FEED ADDITIVES

